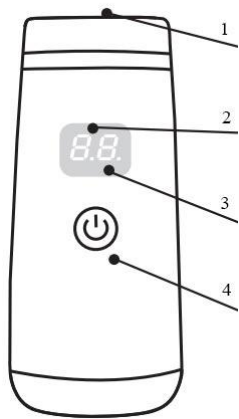
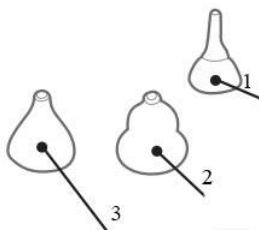


Baby Nasal Aspirator & Electric Ear Wax Remover





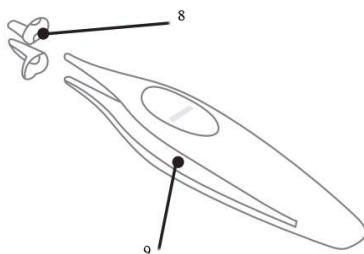
- 1. Work warehouse connection
- 2. Power display
- 3. Gear adjustment
- 4. Switch (Note: Long press the key to turn on for 3 seconds)



- 1. Long mouth funnel nozzle
- 2. Gourd-shaped nozzle
- 3. Funnel nozzle



- 4. Booger clip
- 5. Snot storage tank sealing ring
- 6. Nose storage tank
- 7. Working warehouse base

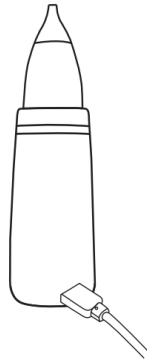


- 8. Silicone case for nose clip
- 9. Booger clip

Preparation before use

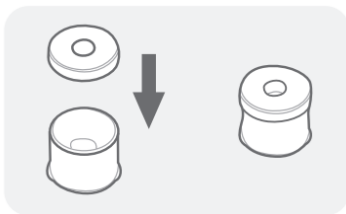
Note: Please fully charge the device for the first use

- When charging the device, please connect the USB cable to the charging hole on the back of the device, and connect the other end to the USB port (mobile phone charger, computerUSB port, etc. The product does not include a charging plug).
- The charging indicator is flashing, indicating that the device is charging, and the charging time is 3 hours.
- The charging indicator shows full grid and no longer flashes, indicating that the device is fully charged. Use time is 60 minutes.

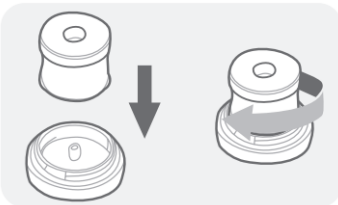


How to use

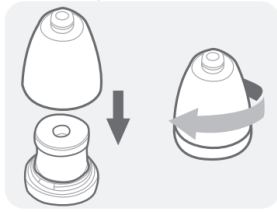
How to assemble the inhaler



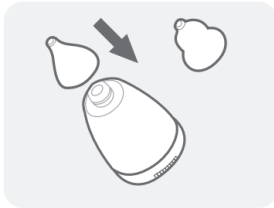
1. Put the anti-backflow silicone cushion cover on the storage tank



2. Put the nasal mucus storage tank into the base of the working chamber and rotate it in the direction of the arrow.



3. Connect and fix the base of the working chamber and the main body of the working chamber.



4. Put the nozzle on the main body of the work chamber.

Put the working chamber on the main body of the nasal aspirator

- Insert the assembled working chamber into the socket of the main body of the nose aspirator.
- Rotate in the direction of the arrow.

Please choose a mouthpiece suitable for the size and shape of your child's nostrils and refer to the severity of your child's nasal congestion.



The funnel-shaped nozzle is more suitable for sucking a thin nose.



The gourd-shaped mouthpiece is more suitable for sucking a sticky nose.



A long-mouth funnel-shaped nozzle is more suitable for earwax.



Press and hold the power button for 3 seconds until the device is turned on, then release your finger



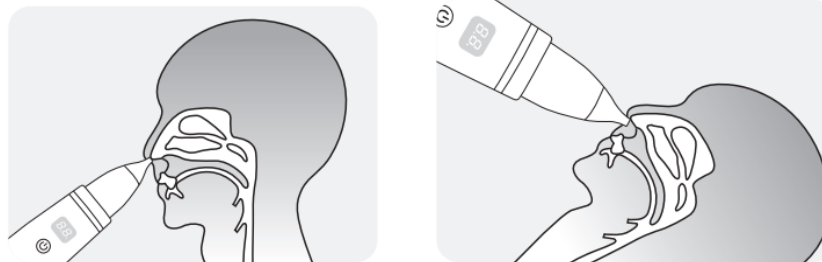
Before turning on the power, make sure that the work compartment is connected to the host.

This device is not a toy.

Please don't let the children play, the accessories may get stuck in the baby's throat and cause danger.

Press the gear adjustment button to adjust to proper suction

- For babies, it is not possible to use the device by themselves. Ask parents to hold the baby or use it lying down.



Please do not insert the device too deep into your nose.

Please do not press the suction nozzle hard into the nasal cavity.

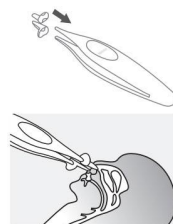
This device is designed to relieve nasal congestion, please do not use it for other purposes.

Please use a nose clip to remove the secretions from the nose of the child.

Please make sure the nose clip is put on the silicone sleeve before use.

The nose clip silicone sleeve can protect the mucous membrane from damage and prevent the nose clip from being inserted too deeply.

When using tweezers for your baby, please ensure that the top of the tweezers is covered with a silicone sleeve for tweezers. Otherwise, it may constitute potential harm.



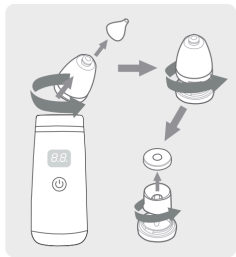
After use, please press the switch to turn off the power

Reference for sniffing method

What should I do if I encounter a dry nose?

The booger becomes solid or semi-solid and needs to be softened with the free saline before inhaling. The saline should fully contact the nose, wait 3-4 minutes after dripping, and then use the nasal aspirator. After sucking out the point, when the nose clip can reach the nose, just use the nose clip to clip it out. If the nose is very dry, you can try to soften it with edible vegetable oil (sesame oil, tea oil, olive oil, etc.), the effect will be better. When the baby resists dripping salt water or oil, you can switch to a hot towel to compress it, which can soften the nose; or it is recommended to breathe it after the baby is bathed. When taking a bath, water vapor will soften your baby's nose, making it easier to suck out than usual.

Maintenance and cleaning



1. After use, separate the working warehouse from the host.



2. Pour out the nasal mucus liquid collected in the nasal mucus storage tank

3. Please disinfect or clean the removed suction nozzle with running water.



4. After washing, please clean it thoroughly before saving.
Please make sure that the accessories are not boiled in the pot during the disinfection process to avoid deformation.

5. If necessary, wipe the host with a soft cloth or a damp cleaning cloth.

Please do not place the host in water or other liquids



1. The whole product is not waterproof. The main unit cannot be washed under the tap, and the head can only be removed and cleaned.
2. Please pay attention to the capacity of the water storage tank when sucking the nose. If it is almost full, please remove the head, pour out the snot in the water storage tank and continue to suck the snot, otherwise it will overflow and suck into the host and cause a short circuit.

How to store and maintain the product after use

1. Please avoid using and storing where liquid may contact the equipment.
2. Please avoid storing in high humidity, high temperature, direct sunlight, poor ventilation and possible exposure Under vibration or impact environment.
3. When the equipment fails, please contact the customer service center, do not disassemble the equipment without authorization. Very important reminder; in order to effectively and completely prevent the evaporation of water vapor or nasal mucus from entering the host circuitBoard or motor, please pull out the work compartment immediately after use, separate the work compartment from the host, and open. The machine runs dry for more than 30 seconds. There will be residual water vapor in the working chamber after cleaning, it is not recommended to connect immediately Connect the host to use, be sure to dry before use.

Troubleshooting

When the suction is poor or not working?

- Low battery - Check battery reminder
- Incorrect assembly of work compartment - Check the assembly of the work chamber (see page 6)
- The working chamber and the host are not firmly connected - Check the connection between the working chamber and the host