

AK73 Women's Smart Watch with Rhinestone Stainless Steel Strap



Product parameters

- Compatible mobile phone system: Android5.0 (inclusive) or higher, iOS9.0(inclusive) or higher
- Main control: RTL8763EWE-VP
- Screen: 1.28 AMOLED Round Screen / Resolution: 416x416

Operating instructions



1. Full screen touchable
2. Power button
3. Heart rate sensor
4. Charging port

Button operation

Status/Operation & Function

Power button: power off/long press for 5 seconds - Power on

Power button: power on/long press for 3 seconds - Power off

Power on button: Short press - Enter the main interface

Power on button: Short press - Return to the main interface

Encoder: Rotation - Main interface rotation switch dial/menu interface rotation up and down movement

Screen operation

Status/Operation & Function

Single click - Select / OK

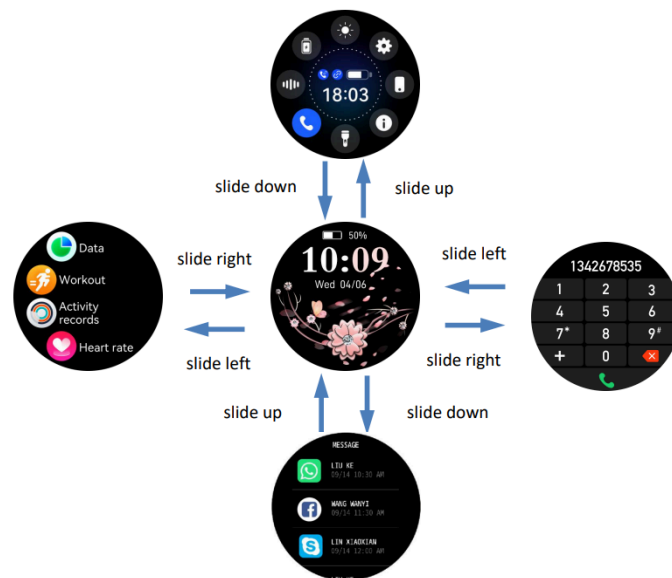
Home page/long press for 3 seconds - Switch dial

Home page/slide up - Message list

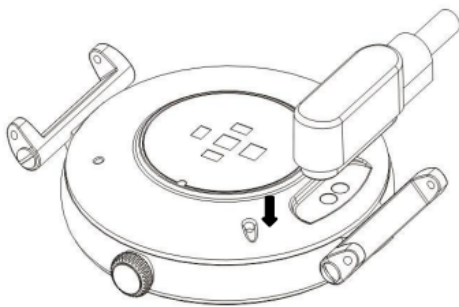
Home page/slide down - Shortcut menu

Home page/slide left - Call/Voice assistant/Motion recording/Sleep information/Heart rate monitoring/Blood pressure monitoring/Weather/Music/Add components

Home page/slide right - Enter home page



Charging instructions



- Please use the charging cradle equipped with the product to align the contacts on the back of the host to charge (please ensure that the battery is sufficient for the first use. If the battery cannot be turned on normally at low power, please charge it before operating. Please charge correctly as shown in the right picture).

- Do not use a power adapter with an output current of more than 2A to charge.

Download and install the "FitCloudPro" APP

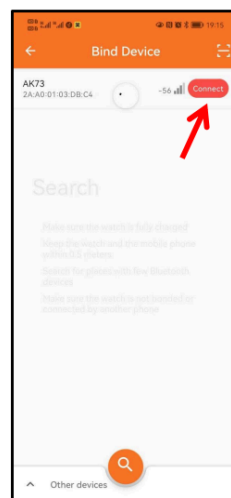
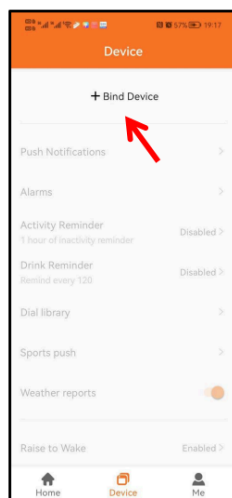


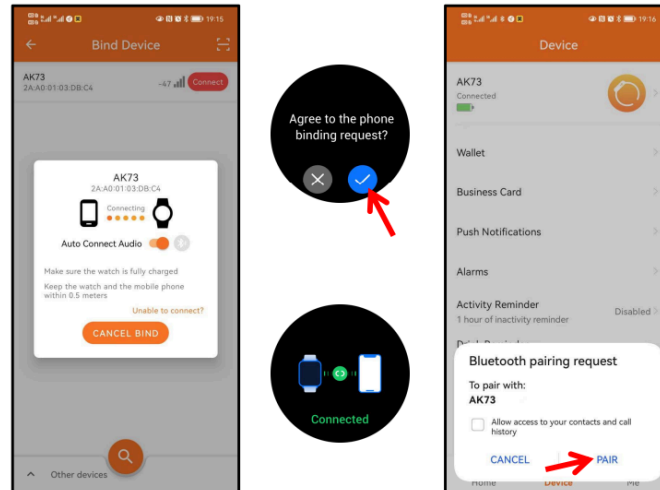
- Scan and install by scanning the QR code on the right.
- Download and install through the app market: Android system: search for "FitCloudPro" through App Store, Google play, Android Market and other app markets to download and install; IOS system: search for "FitCloudPro" through the App Store to download and install.

APP connection

(make sure mobile phone Bluetooth is turned on and not connected with other devices)
shortcut menu→settings→about interface, the MAC address of the watch will be displayed, and your device can be determined by the MAC address in the device table.
After the watch is successfully bound, the watch will be automatically connected with the mobile phone every time the client is opened in the future. You can synchronize data by pulling down the data page of the client.

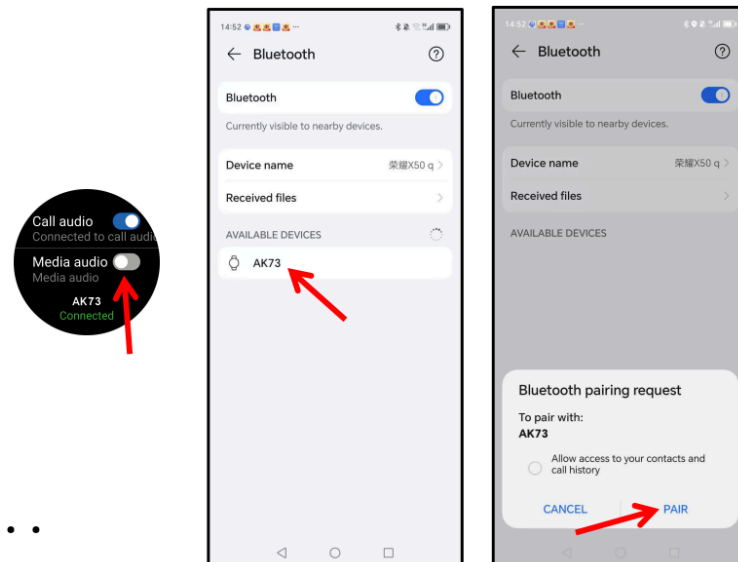
1. Open the mobile client App to set personal
2. Switch to the device page and click bind
3. Click your device (AK73) in the scanned
4. Binding complete





Call Bluetooth connection

Turn on the watch "TURNON", and the "AK73" Bluetooth pairing will pop up automatically on the mobile phone. Click pairing. When Bluetooth is connected to the mobile phone, you can use the watch to dial, control the mobile phone to make a call, listen to music, and view the call record information of the watch. If you click Unpair, when you need to pair the Bluetooth for a call again, open the watch "Enable call function", open the phone settings → Bluetooth option, view all devices, and click "AK73" to connect.





Add contacts: enter the "FitCloudPro" app, click "quick communication" → select contacts to add (at present, up to 10 contacts can be added)

Watch function mode

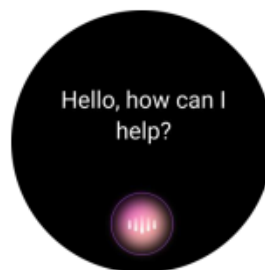
- **Main interface switching:** long press the main interface for 3 seconds to enter the selection dial interface, slide left and right to select the main interface, Click to confirm.



Custom dial: enter the "FitCloudPro" app and click - > dial selection->Edit to select the dial you want.

Find more dials: enter the "FitCloudPro" app and click "dial selection"->more dial settings.

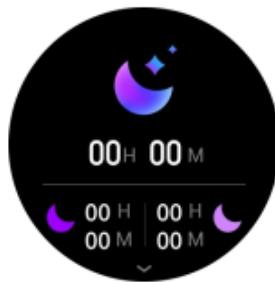
- The voice assistant is a smart mobile phone application, open it and you can command your mobile phone through smart dialogue, such as sending a message to make a call.



- **Step counting:** wear the watch normally, and the watch displays the current exercise steps, distance and calories (the data of the day before 0:00 a.m. every day)



- **Sleep monitoring:** wear a watch to sleep. The watch will automatically monitor the length of deep sleep, light sleep and total time yesterday. The detailed data is displayed on the app side, and the user can view the sleep quality and sleep duration distribution map in the app.



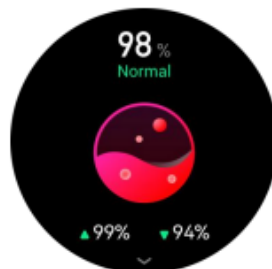
- **Heart rate measurement:** click the screen in the heart rate interface to measure the current heart rate value. It can also be measured manually on the heart rate interface of APP end (the data is only for reference and not for medical use).



- **Blood pressure:** click the screen in the blood pressure interface to measure the current blood pressure value. The icon flashes as in the test and slides right to exit. It can also be measured manually on the app side blood pressure interface (the data is only for reference and not for medical use).



- **Blood oxygen:** click the screen in the blood oxygen interface to measure the current blood oxygen value. The flashing icon indicates that the test is in progress, or it can be measured manually on the app end blood oxygen interface (the data is for reference only, not for medical use).



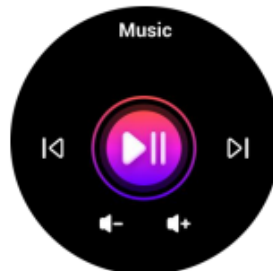
- **Breathing exercise:** Exercise mode: Built in 8+1, with 112 sports modes to choose from: walking, running, cycling, basketball, football, badminton, jump rope, After activating the sports mode, slide left to select pause/end sports. If you want to add a sports mode, slide down to the bottom and click add to select the desired sports mode.



- **Weather:** the current weather and air quality information will be displayed on the weather interface. Slide up the weather interface to view the weather conditions in the next 6 days. The weather information can only be obtained after the app is connected. If the connection is disconnected for a long time, the weather information will not be updated.



- **Music control:** after connecting the mobile phone, the watch can control the pause / play of mobile phone music, the previous song and the next song.



- **Breathing training:** Breathing function exercise is used to effectively breathe, strength then breathing muscles, and deep breathing can help you relieve stress.



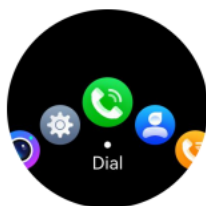
- **Information push:** this watch supports phone / SMS / wechat / Facebook/Twitter/WhatsApp/Skype /other application information push. This page only saves the last 5 information records, and you can turn on the corresponding switch according to your needs. (note that when the Android mobile phone opens the information reminder, it must set the notification right of the app to the mobile phone, otherwise the watch will not receive the reminder).



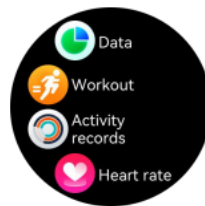
- **Other function interfaces:** Other features of the watch include: stopwatch, alarm, timer, women, find phone, calculator, time setting, settings.



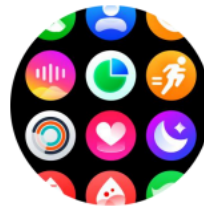
Menu view: It is divided into four modes: semi-circular menu style, list menu style, nine-grid menu style, and flat ring menu style.



Half-circle menu



List menu



Nine-grid menu



Circular menu

Note: more detailed analysis and data records can be viewed in the app.

Frequently asked questions and answers

Why does the blood pressure value deviate from the sphygmomanometer?

- The deviation between the measurement values of the watch and the sphygmomanometer is determined by many factors. The measurement part of the sphygmomanometer is in the brachial artery, and the measurement part of the watch is in the two main public branches of the micro artery. Under normal circumstances, the measurement value of aortic blood pressure and microarterial blood pressure will differ by 30 to 40. If you use a watch and a sphygmomanometer to measure at the same time, since the blood flowing in the artery is in the centrifugal direction, when the sphygmomanometer measures, the lower part of your elbow is under pressure, and the blood cannot branch smoothly to the artery below. Flow, increased vascular tension, will make the upper and lower blood pressure measurements more deviations.

Why can't the user take a hot bath with the watch?

- The ambient temperature during bathing is relatively high, which will produce a lot of water vapor, and the water vapor is gaseous, its molecular radius is small, and it is easy to seep into the gap of the watch. When the temperature drops, it will condense into liquid water droplets again, which is easy to cause. The internal circuit of the watch is short-circuited, destroying the circuit board, and then destroying the watch.

Why can't the watch receive the message push?

- Android phone settings: Confirm that the message push switch is turned on on the mobile client. The confirmation message can be displayed normally in the mobile phone notification bar. The watch message push is pushed by reading the message in the mobile phone notification bar. If there is no message in the mobile phone bar, the watch will not be able to receive the push. (You need to find the notification settings in the phone settings, and turn on the notifications with WeChat, QQ, phone, SMS, and mobile client) Open the accessibility settings of the bracelet client (Find the accessibility in the phone settings, open the accessibility settings of the bracelet client) iPhone settings Confirm that the message push switch is turned on on the mobile client. The confirmation message can be displayed normally in the notification bar of the phone (You need to find the notification settings in the phone settings, and turn the notification switch of WeChat, QQ, phone, SMS, and mobile client).