

Q1A Wireless CarPlay / Android Auto Adapter with AirPlay



Product Features

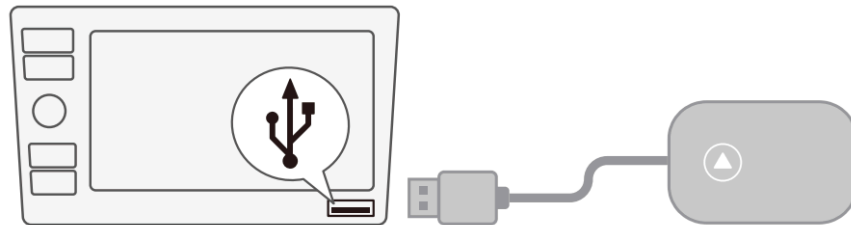
This product has been converted from wired CarPlay to wireless CarPlay, Android Auto, and AirPlay.

Instructions for use

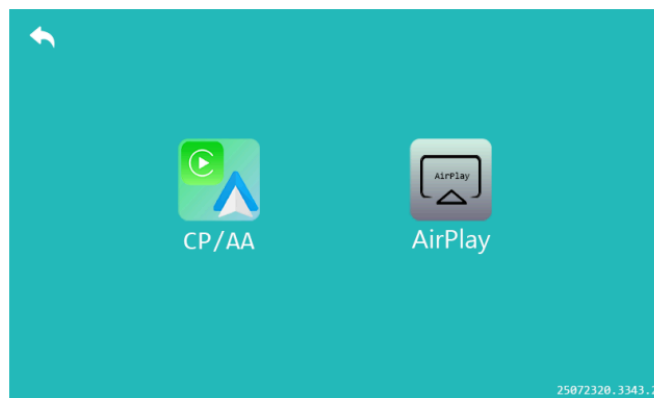
Essential conditions for using the product: The original car comes with a wired Carplay (original car infotainment system). Confirm whether the original car does not come with Carplay function (check through the car's official website or the car's infotainment system).

Steps to connect the original vehicle

1. Start the car.
2. Connect the Wireless CarPlay Adapter to your vehicle's USB or USB-C port (Information transmission port).



3. Wait for 15 seconds (some cars need to select the CarPlay icon on the display screen), a connection window will pop up.



AirPlay connection steps

Step 1: First, connect the Internet Box.

Step 2: Click on wireless screen mirroring.

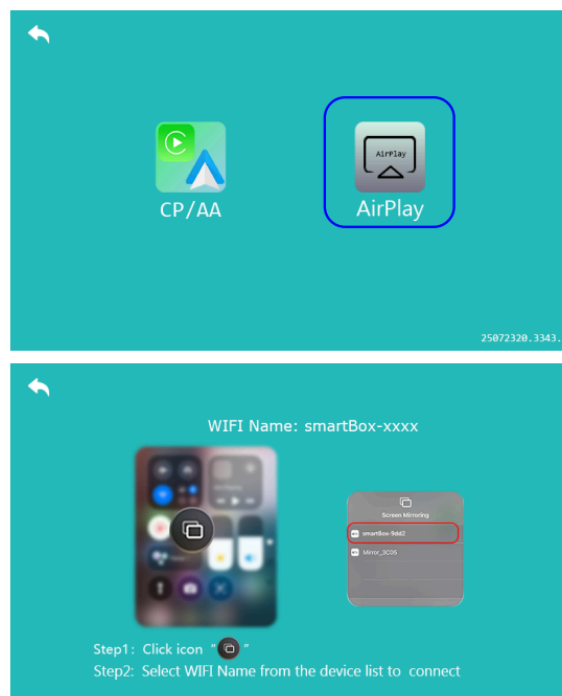
Step 3: Open the mobile WIFI, match the box model, and enter the password 88888888.

Step 4: Find the wireless screen projection entrance on your phone (usually available in the drop-down menu function list) or search for it in the settings.

Step 5: Find the device name of the box in the wireless screen list, click on the device name and connect to it, and then cast the screen for use.

AirPlay Connection Interface

It is recommended to update your phone to the latest version or use it with iOS 18 or above.



CarPlay/Android Auto connection steps

Step 1: Connect the Internet Box first.

Step 2: Click on the CP/AA icon on the interface.

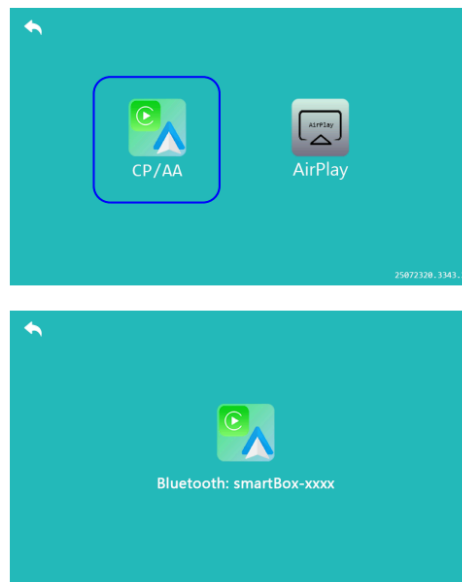
Step 3: Make sure your phone is connected to Bluetooth.

Step 4: Turn on Bluetooth and WiFi on your phone.

Step 5: Search for Bluetooth on your phone for pairing.

Step 6: After connecting to Bluetooth, it will automatically recognize and connect to Carplay/Android Auto.

CarPlay/Android Auto Connection Interface



Three in one Apple screen mirroring and startup interface

Notice: This product enables access to streaming apps. These should only be used when the car is stationary. These users assume all responsibility for compliance with local laws. The seller accepts no liability for the misuse of this product.

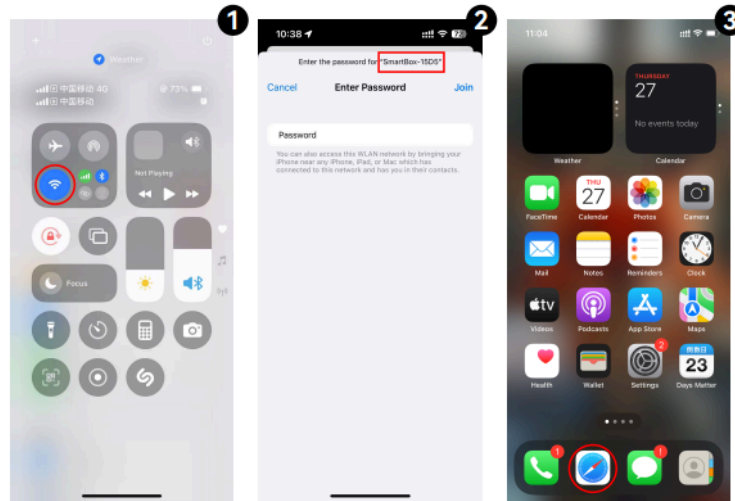
OTA upgrade

Need to upgrade OTA in case of connection failure or disconnection.

Step 1: Turn on your phone's WiFi.

Step 2: Connect to WIFI, name: "SmartBox-xxxx", Password: "88888888".

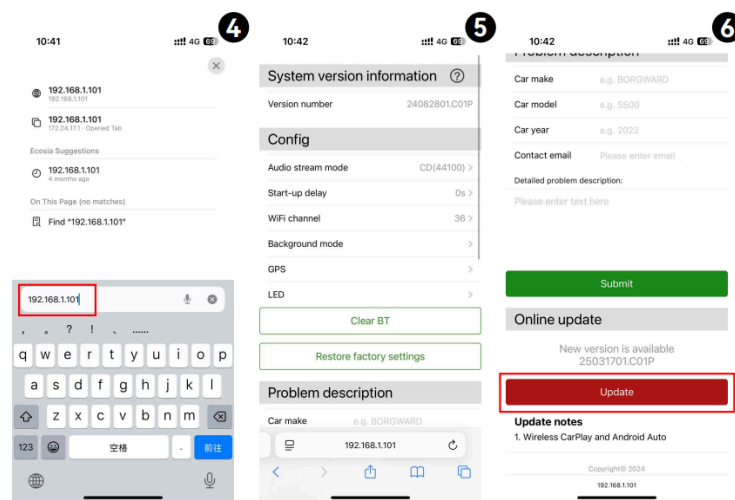
Step 3: Open the mobile browser.



Step 4: Enter the website address "192.168.1.101".

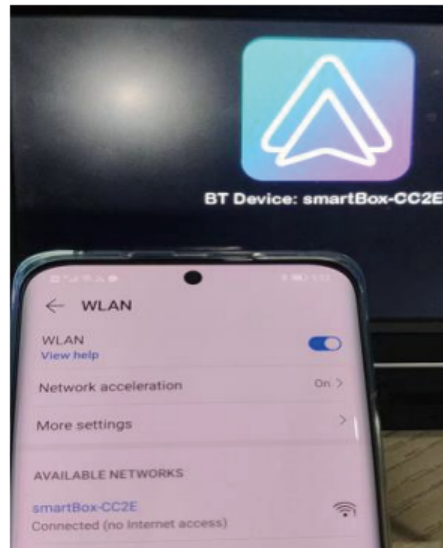
Step 5: Enter the OTA upgrade interface.

Step 6: Pull down the upgrade interface, click "Update", and after loading the box, the upgrade is complete.



Prerequisite: You can only operate the background after disconnecting the Android Auto connection >>Android Auto is connected, you need to disconnect the WiFi and Bluetooth on your phone.

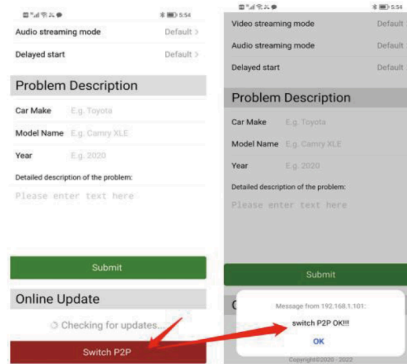
1. Turn on WiFi on the mobile phone and connect to the device's WiFi (password 88888888).
2. The Android phone is in a connected device WIFI state (as shown in the picture).



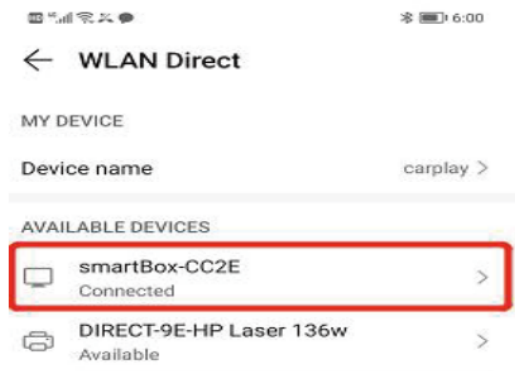
3. Open a browser and enter the URL 192.168.1.101 (as shown in the picture).



4. Click on "Switch P2P", the image on the right indicates successful P2P setup.



5. On the mobile end, enter "Settings - WLAN-WLAN Direct Connection" and click on the device name to connect.



6. Return to the browser and click "Update" to complete the upgrade.

(PS1: The upgrade is expected to take about 8-10 minutes, with actual prompts as the main information (as shown in the figure), and the right figure indicates a successful update).

(PS2: The device light flashes rapidly during the upgrade process, and stopping the rapid flashing indicates a successful update).

